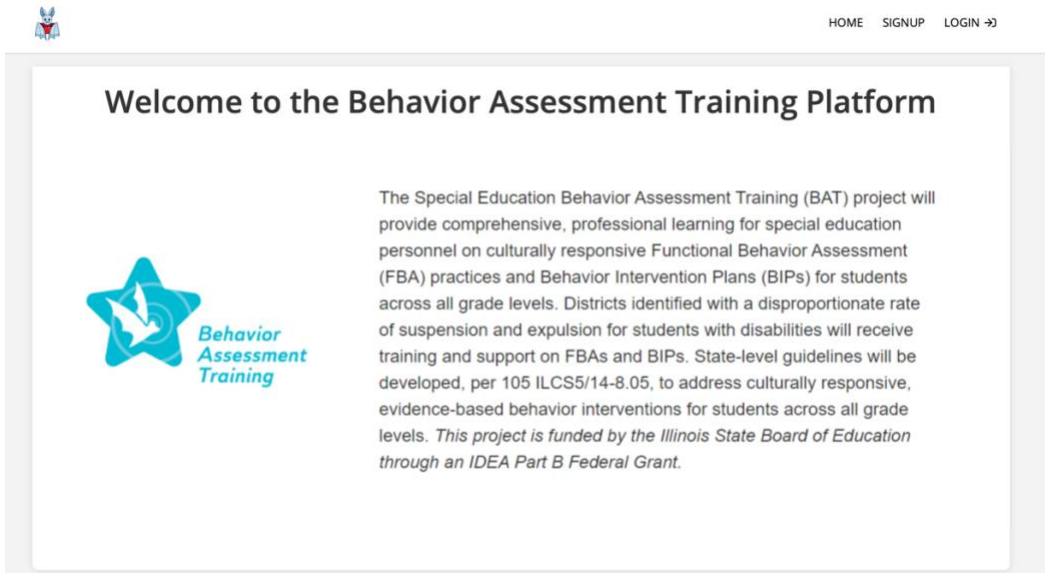


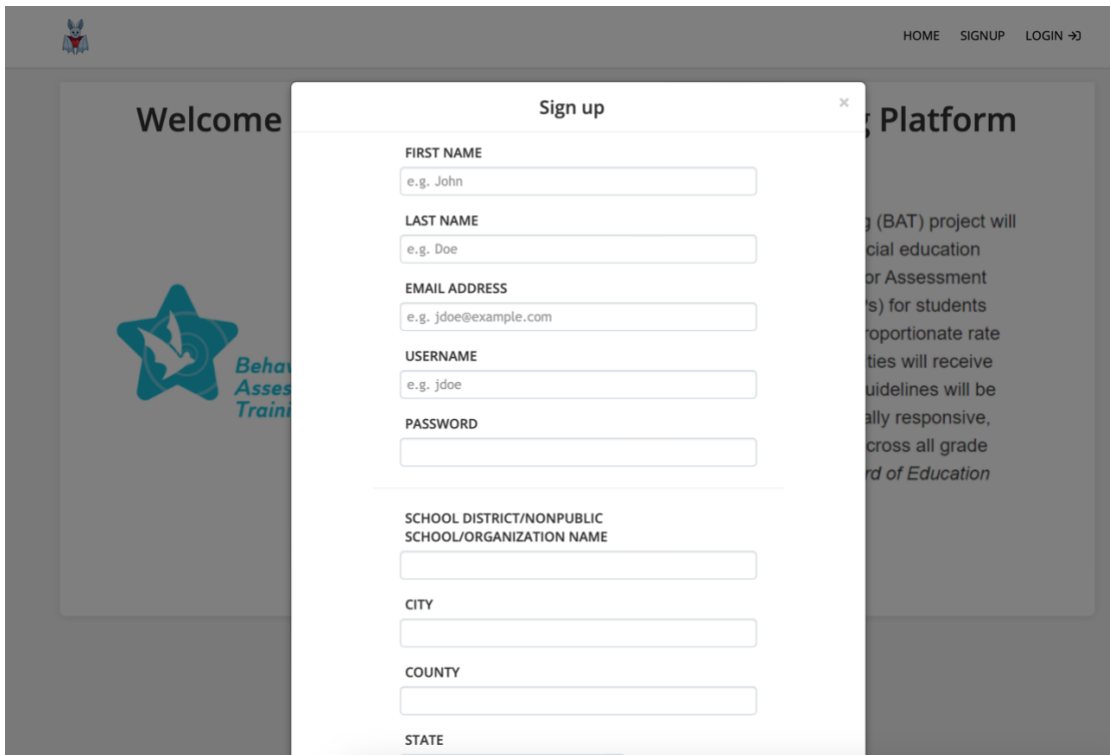
# How to create a LMS account?

To create an account on Talent LMS, you typically follow these steps:

1. **Visit the website:** Go to the SIU BAT [Talent LMS website](#) using your preferred web browser.



2. **Sign Up/Register:** Look for a "Sign Up" or "Register" button on the homepage. Click on it.



3. **Fill Out the Form:** You'll be directed to a registration form where you'll need to provide some basic information such as your name, email address, School district, City, County, State, desired username, and password etc.

Sign up

COUNTY

STATE

POSITION

GRADE LEVEL (MOST REPRESENTATIVE OF STUDENTS YOU WORK WITH)

GENDER: THIS DATA IS REQUESTED BY THE ILLINOIS STATE BOARD OF EDUCATION

GENDER - IF "PREFER TO SELF DESCRIBE", PLEASE SPECIFY HERE (OPTIONAL)

RACE: THIS DATA IS REQUESTED BY THE ILLINOIS STATE BOARD OF EDUCATION

I'm not a robot

reCAPTCHA  
Privacy - Terms

4. **Complete Registration:** Once you've filled out the form, you should be registered and ready to log in to your Talent LMS account.
5. **Log In:** After registration, return to the Talent LMS website and log in using the username and password you provided during registration.
6. **Explore and Customize:** Once logged in, you can explore the features of Talent LMS and customize your account settings according to your preferences.

If you encounter any specific issues during the registration process, please reach out to Michelle Connect for best possible assistance.